



# Wafer World

For PRIVATE Circulation only

The regular insider information from R&D Engineers

Edition: 01, Oct'07

The inaugural issue of Our Bulletin "WAFER WORLD" is in your hands now. We wish to share with you, our expertise and experience in Wafer & Cones manufacturing technology

## STOP PRESS



## The future has arrived !

Advanced **HMI** based process control for our 'WA' Series Wafer Plant

What is HMI..?

HMI stands for "HUMAN MACHINE INTERFACE".

With skilled manpower now is scarce supply, we have updated the automation technology on our plants for lower manpower requirements.

### *New Wafer product possibilities*



Temperature plays an important role in the lubrication of rolling bearings. Previously, extremely high temperatures could be mastered only by way of corresponding design measures oil circulation lubrication.

Now, BARRIERTA lubricants specially developed for temperatures from 200 to 260 °G close this classic gap. And new possibilities have now been provided for long term and lifetime lubrication in the 100 to 200 °G range.

While mineral oil base lithium soap greases retain their lubricity for a maximum of 200 hrs at 150 °q, and silicone greases polymerize to a rubbery mass at 200 °G, BARRIERTA lubricating greases are not subject to carbon formation or polymerization even at 260 °G. Those with the biggest thermal stability exhibit a change in penetration of only some 50 x 0.1 mm after 1,000 hrs at 250 °G. Subjected to mechanical and dynamic stresses in ball bearings,

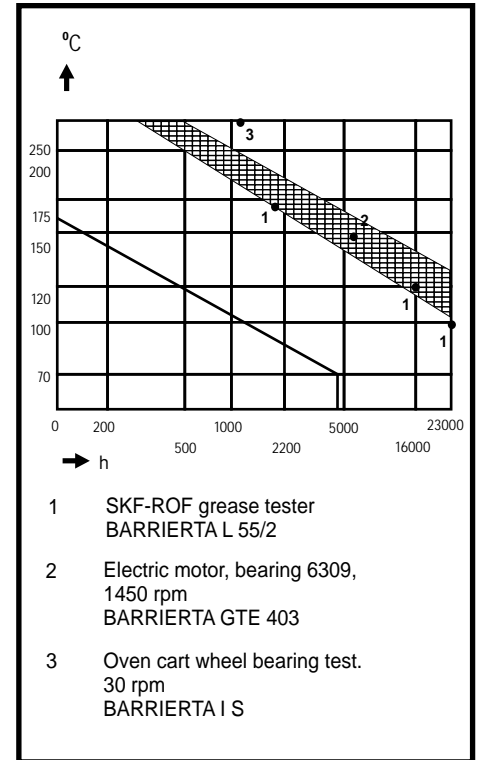
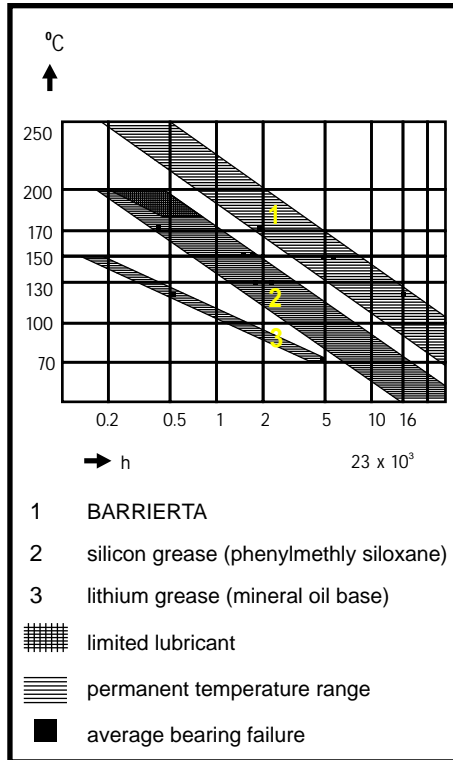
250 °G  
n = 30 rpm  
Fr = 5,000 N

lubricating intervals exceeding 1,000 hrs are possible.

Due to their exceptional thermal stability, BARRIERTA lubricants are valued as high-temperature structural elements for rolling bearings.

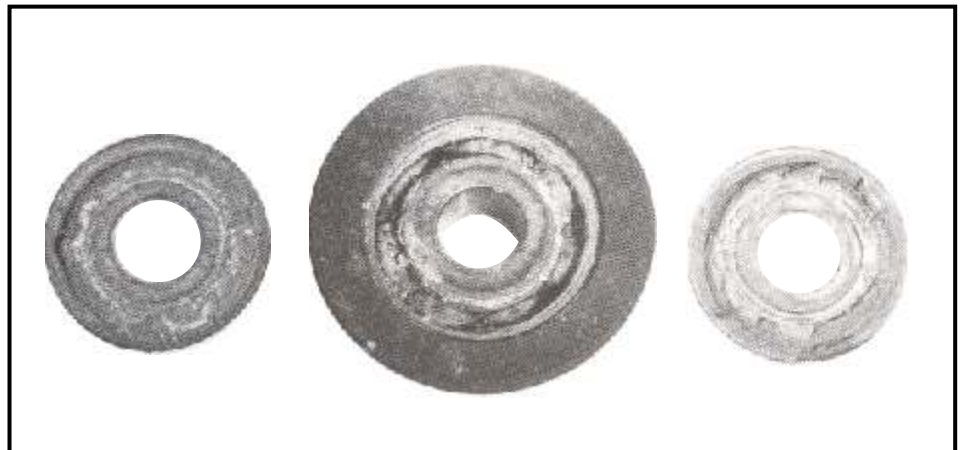
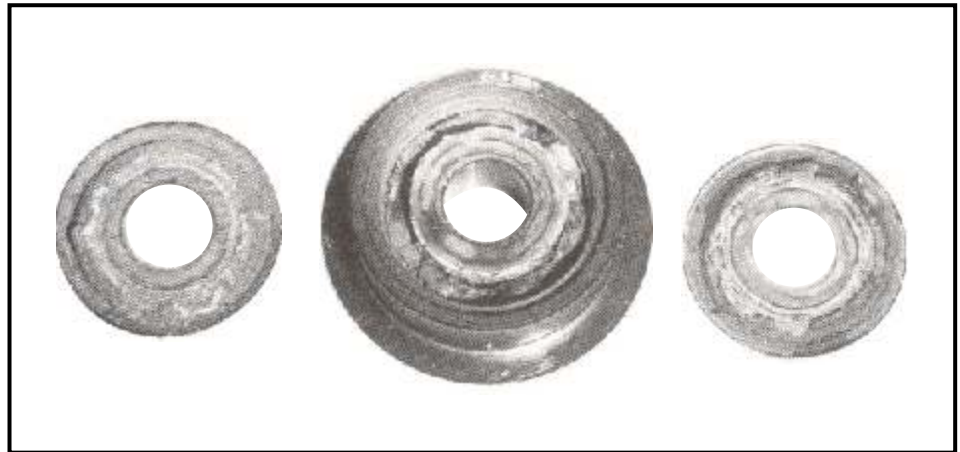
**Some examples:**

- Load and turn rollers in conveyors, automatic bakery ovens and drying kilns
- Running wheels on oven and autoclave carts
- Guide rollers in fabric conveyor chains in stentors
- Rolling bearing assemblies in calendars or coating plants
- Bearing assemblies in electric motors and fans.



*L<sub>10</sub> running time in SKF grease testing machine ROF Service periods for BARRIERTA greases*

Bearing : 6204 2 Z/C3  
Speed : 10,000 rpm  
Load : F<sub>r</sub> = 50 N, F<sub>a</sub> = 100 N



*BARRIERTA L 55/2 for rollers in waffle baking machines. The grease is still in good condition after 3,000 hrs.*

# GLIMPSES

# GLIMPSES!

## Wafer Biscuit Project at Madagascar



## Ice Cream Cone Project in United Kingdom



## FORTHCOMING EXHIBITIONS

INTERPACK 2008

Düsseldorf Trade Fair Center, Düsseldorf, GERMANY.

24th - 30th APRIL 2008

Stand No. 4/F42



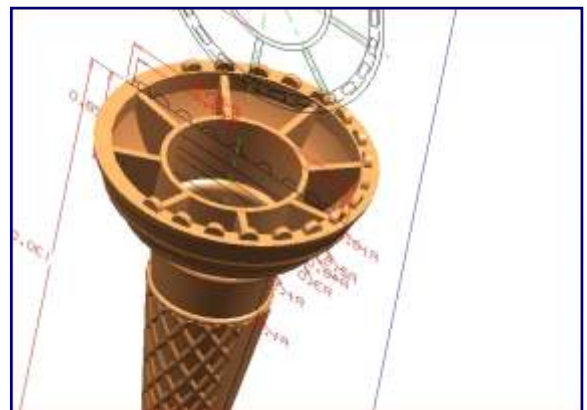
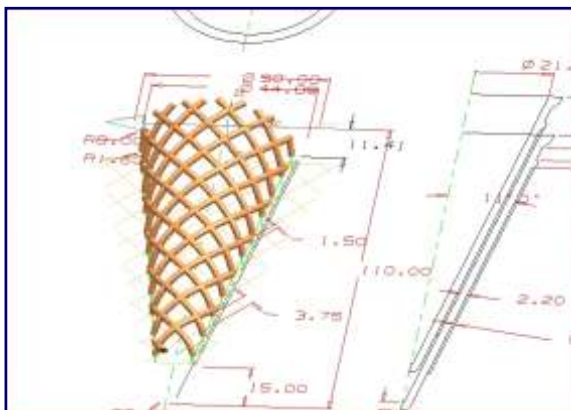


## Die & Mould Making Becomes Easier With Reduced Cycle Time

MOULD making, till some time ago, largely depended upon the skills of the mould maker. Good mould making took precious time. Variations with the design were not uncommon.

Times have changed. The cycle time has shrunk. Over dependence on the mould maker has given way to efficient machines and tools. These machines and tools are accurate, render better surface finish, and perform consistently. The parts are closer to the design.

At R&D Engineers, Mould making has become easy with the modern machining center from BFW, Bangalore. With consistent repeatable accuracy.



We use the latest application of CAD / CAM Solution for meeting customer demands



**We Welcome your feedback and comments for improving our bulletin**